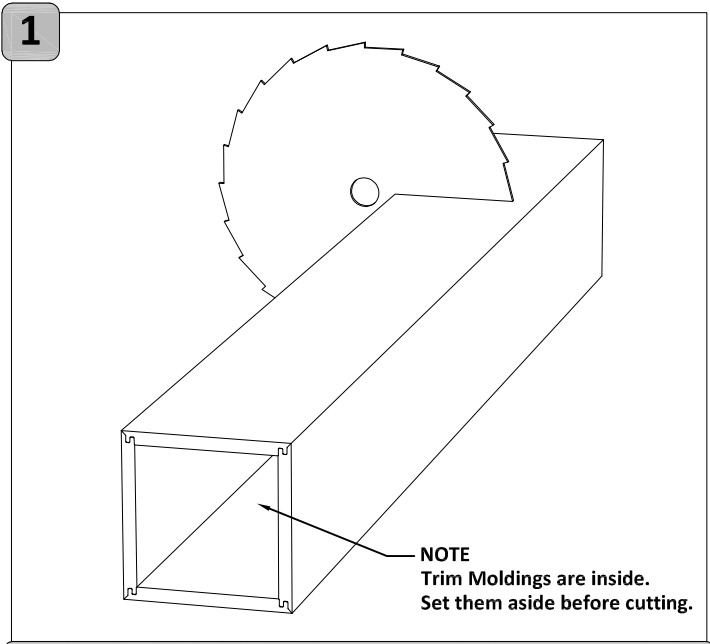


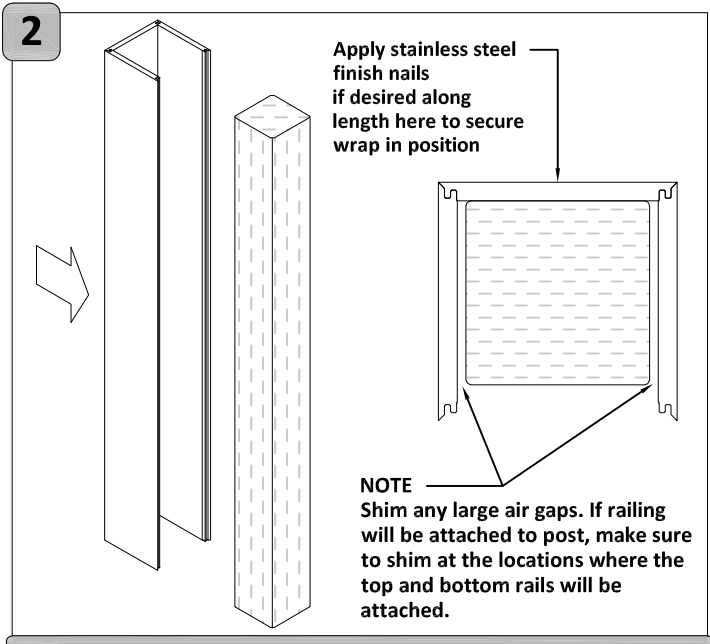
Easy Wrap Installation Instructions



Trim Parts to Application Length

A. Remove assembled Easy Wrap from box and set the trim moldings aside. Cut the assembled Easy Wrap to installation length. Use caution as one side is not glued but press fitted only.

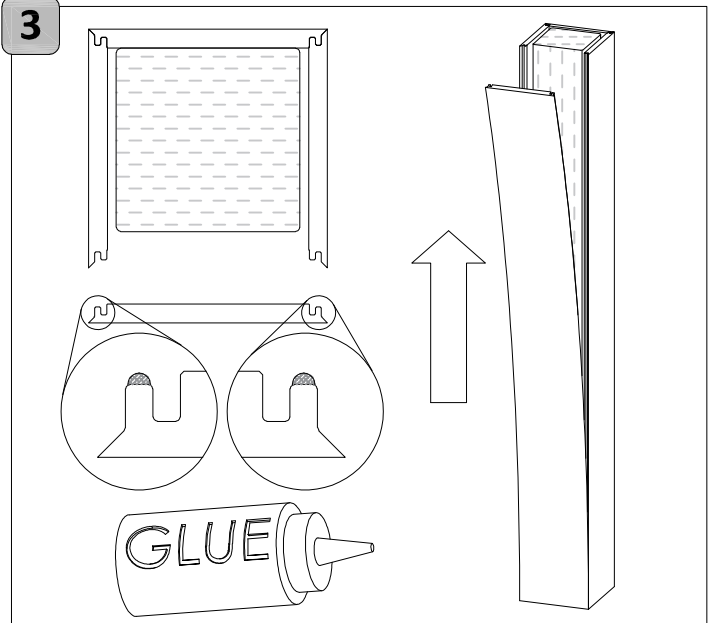
B. Once cut, remove the loose section and set it aside.



Set Assembly Around Post

A. Stand 3-walled assembly upright and slide it around the post. Shim if necessary based on post size / air gap.

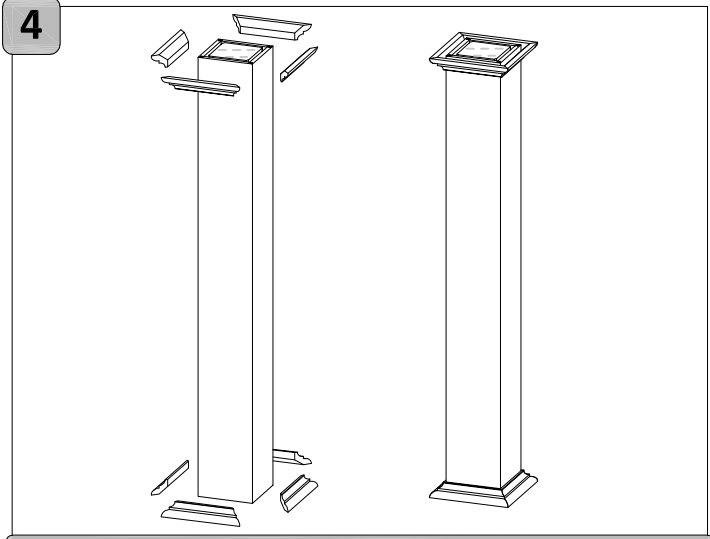
B. Use stainless steel fine finish nails (if desired) to secure the wrap in position around the post during installation.



Install Final Section

A. Run small beads of adhesive (PVC Cement) along both exposed Tongue and Groove ends of the assembled wrap as shown.

B. Working from the bottom up, press the loose section into place, ensuring corners are fully seated.



Finish Install

A. Inspect the installation to ensure there are no gaps at the corners. If necessary, push any gaps closed and use stainless steel fine finish nails to secure them.

B. If desired, remove sharp corners of post gently using a sanding block with fine grit (220) paper.

C. Apply mitered trim moldings to top and bottom using adhesive and stainless steel nails.