



## Marketing Materials

### Literature

SKU #	Description	Cost
INTEXBR76P	Catalog/Brochure, 76 Page, All Products	\$2.65
INTEXRS40DT	Hampton RS40 Tri-Fold Pocket Literature, 4" x 9" Pack size 50 each.	\$0.27
INTEXRS60DT	Liberty RS60 Tri-Fold Pocket Literature, 4" x 9" Pack size 50 each.	\$0.27
INTEXRS35DT	Dartmouth RS30 Tri-Fold Pocket Literature, 4" x 9" Pack size 50 each.	\$0.27
INTEXSHUTBRO	Shutter Brochure 11" x 17"	\$0.32
SHUTTERSWATCH	Shutter Paint Color Swatch	\$1.26
INTEXOLC	Outdoor Living Catalog, Including Fence, Shower Enclosure, Pergola	\$1.76

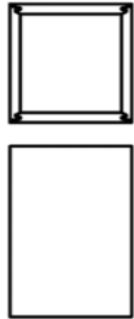


## Sleeve Samples

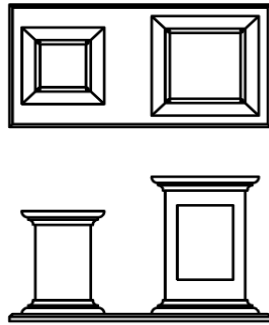
SKU #	Description	Cost
EASYSAMP	Easy-Wrap Column Sample w/Graphic, 4-1/2" Sq x 6-1/2".	\$24.21
EASYSAMP-KD	Knocked Down Easy-Wrap Column Sample, 4-1/2" Sq x 6-1/2".	\$24.21
EASYWRAPDISP	Easy-Wrap Counter Display, 4-1/2" SQ & 6-1/2" SQ, Graphics, 75 Bed Trim, Brown Painted Base	\$113.87
NRE-NRASAMP	Newel Sample 8" x 24" with Recessed & Raised Panels, Flat, with Base Wrap & WM164 Trim	\$57.46
SQCOLSAMP	6" SQ x 18" Column Wrap Sample- Multi Faced, with 2" Cap and 6" Base Wrap & 164BC Trim	\$106.65
TCOLSAMP	Square Tapered Column Sample Multi faced, 5/8" Wall, 8" to 6" Taper, 18" Tall, with WM75 Cap and Base Trim, 5/8" Thick Cap and Base Plates	\$120.56
COLUMNDISP	Column wrap counter display, Multi design faces. Tapered and Square, with lit holder and flyers	\$278.41



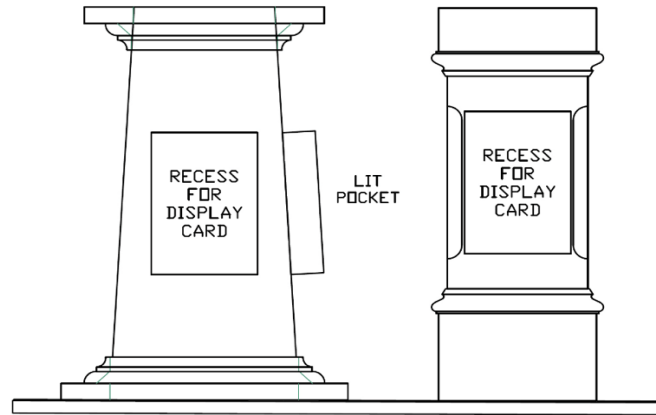
## Sleeve Samples



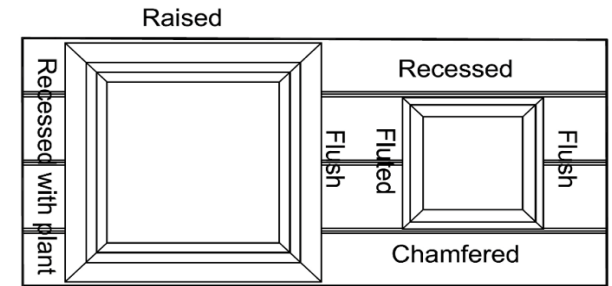
**EASYSAMP**



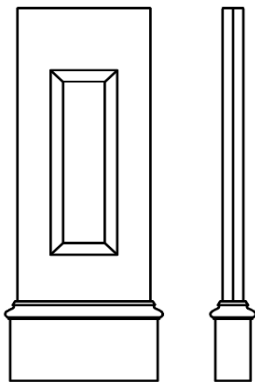
**EASYWRAPDISP**



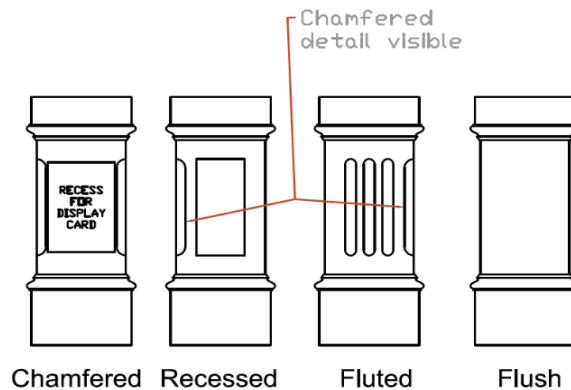
**COLUMNDISP**



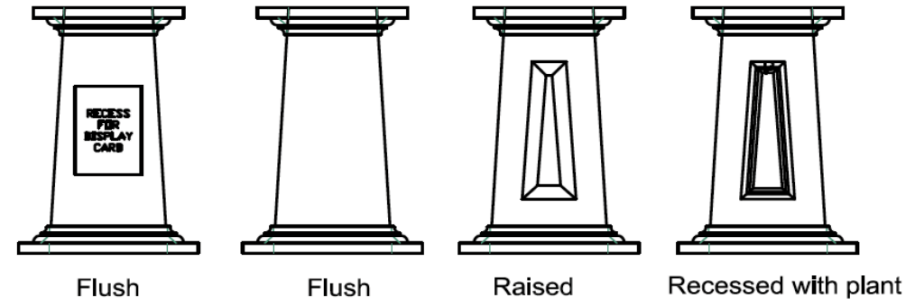
**COLUMNDISP - Top View**



**NRE-NRASAMP**



**SQCOLSAMP**

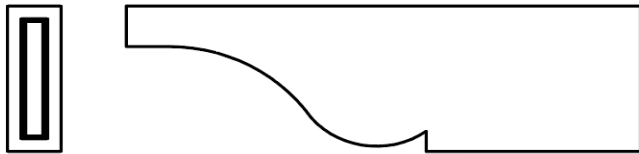


**TCOLSAMP**

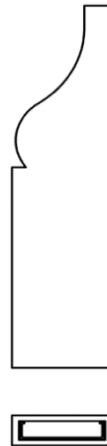


## Pergola Samples/Displays

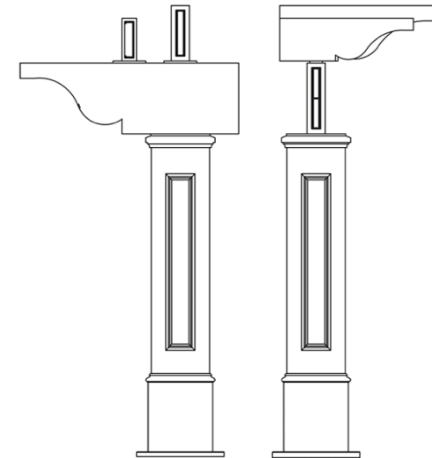
SKU #	Description	Cost
EPR7SAMPLE	Engineered Pergola 7" Rafter Sample, w/PT1 Tail and Aluminum Reinforcement	\$62.06
EPR9SAMPLE	Engineered Pergola 9" Rafter Sample, w/PT1 Tail and Aluminum Reinforcement	\$62.59
PKR5SAMPLE	Classic Kit Pergola 5" Rafter Sample, with PT1 Tail and Aluminum Reinforcement	\$51.24
PERGDISP	Pergola Rafter Display, Rafter Variations with PT1 Tails on 8" Recessed Column with INC004 Inlays	\$413.68
CCTAILSAMP-HOLLOW	Hollow Soffit Tail Sample, 3" Thick, 7" Tall, 24" Long, PT1 Tail 1 End. Edges Sanded/Painted	\$81.36



**EPR7SAMPLE**  
**EPR9SAMPLE**



**PKR5SAMPLE**



**PERGDISP**



## Railing Mini Samples

SKU #	Description	Cost
RS10600SAMP	RS10600 Rail Cut 6", Top and Bottom Section and Reinforcement	\$28.40
RS20500SAMP	RS20500 Rail Cut 6", Top and Bottom Section and Reinforcement Plus Optional Wood cap	\$27.01
RS20700SAMP	RS20700 Rail Cut 6" Top and Bottom Sections with Reinforcement	\$37.59
RS20800SAMP	RS20800 Rail Cut 6" Top and Bottom Sections with Reinforcement	\$41.56
RS35MS350	Dartmouth 3-1/2" Top, Bottom Rail & Reinforcement, + Baluster & Bracket	\$18.46
RS35MS400	Dartmouth 4" Top, Bottom Rail & Reinforcement, + Baluster & Bracket	\$18.57
RS40MSFT	Hampton Flat Top, Bottom Rail & Reinforcement, + Baluster & Bracket	\$14.47
RS40MSFT-M	Hampton Flat Mahogany Top, Bottom Rail & Reinforcement, + Baluster & Bracket	\$15.22
RS40MSPT	Hampton Peaked Top, Bottom Rail & Reinforcement, + Baluster & Bracket	\$14.47
RS40MSPT-M	Hampton Peaked Mahogany Top, Bottom Rail & Reinforcement, + Baluster & Bracket	\$17.28
RS50500SAMP	Nautilus RS50500 5" Top Cap Rail 6" Sample, Top & Baluster Cap, Bottom Rail, + Reinforcement	\$30.79
RS50SAMPLE	RS50 5" Gooseneck Rail Sample, 36" Section, Top Rail Only, with Reinforcement, Prime Coat Applied	\$186.90
RS60MS275	Liberty 2-3/4" Graspable Top, Bottom Rail & Reinforcement, + Baluster & Bracket	\$14.88
RS60MS350	Liberty 3-1/2" Top, Bottom Rail & Reinforcement, + Baluster & Bracket	\$15.07
RS60STAIRSAMP	RS60 Salesman Stair Sample, Routed Common Rails, with (2) Short Stair Balusters	\$31.24
RS60MS350-GBAL	RS60 Liberty Series 3-1/2" Top with Glass Baluster, Mini Sales Sample	\$40.66
RS60MS275-AL	RS60 Liberty Series 2-3/4" Top with Black Aluminum Balusters, Mini Sales Sample	\$29.66
RS60MS350-AL	RS60 Liberty Series 3-1/2" Top with Black Aluminum Balusters, Mini Sales Sample	\$29.95



## Railing Mini Samples



**RS10600SAMP**



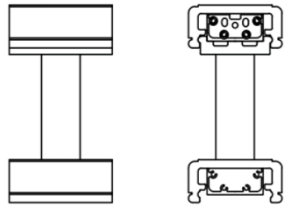
**RS20500SAMP**



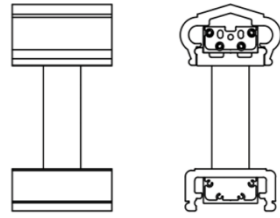
**RS20700SAMP**



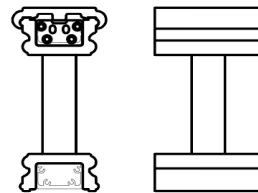
**RS20800SAMP**



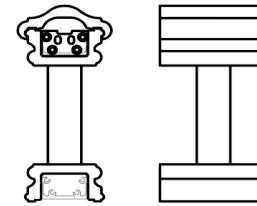
**RS35MS350**



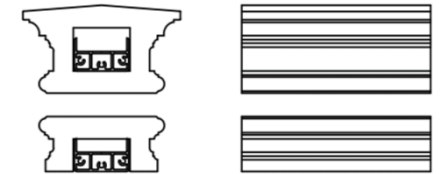
**RS35MS400**



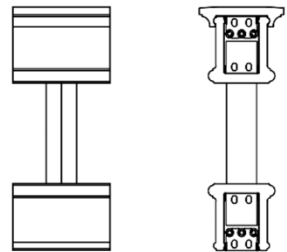
**RS40MSFT-M**  
Mahogany Top



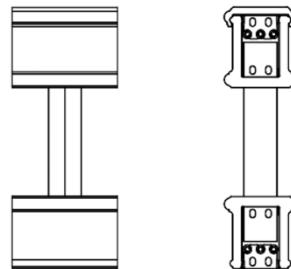
**RS40MSPT-M**  
Mahogany Top



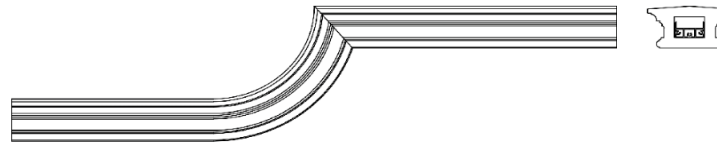
**RS50500SAMP**



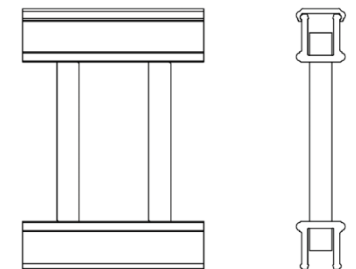
**RS60MS350**



**RS60MS275**



**RS50SAMPLE**



**RS60STAIRSAMP**

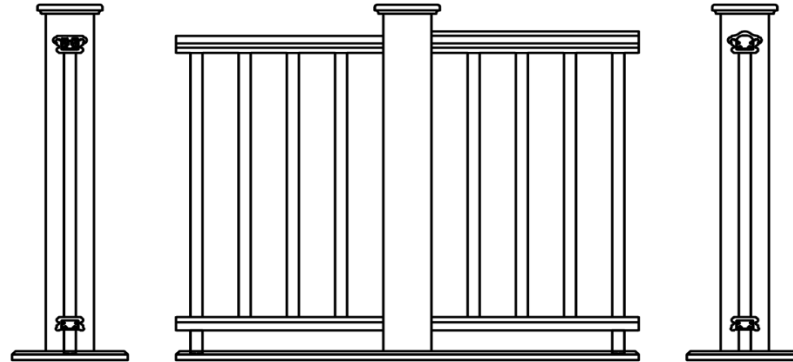


## Railing Floor Displays

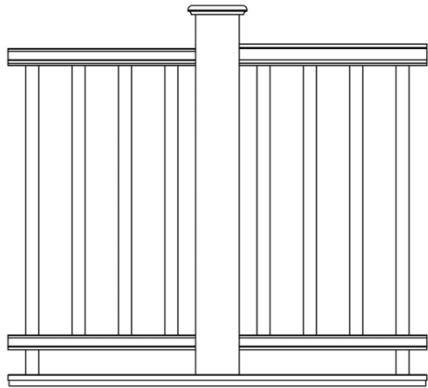
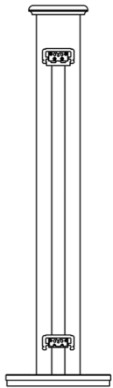
SKU #	Description	Cost
RS40RAILDISP	Display, RS40 Hampton Rail, Include Flat & Peak Rail with 5" Newel Cover & Plain Cap, Includes Graphics and Literature	\$375.84
RS35RAILDISP	Display, RS30 Rail System, Include RS30350 and RS30400 with 5" Newel Cover & Plain Cap, Includes Graphics and Literature	\$414.85
RS60RAILDISP	Display, RS60 Liberty Series, Include 3-1/2" and 2-3/4" (Graspable) Section, with 5" Newel, Molded Base Trim and Flat Cap. Includes Graphics and Literature	\$417.57
RS60RAILDISP-AL	Display, RS60 Liberty Rail Floor Display with 3-1/2" Top Straight Section with Aluminum Balusters, 2-3/4" Straight Section with Hollow Baluster, Flat Cap & Injection Molded Base Trim. Includes Graphics & Literature	\$466.95



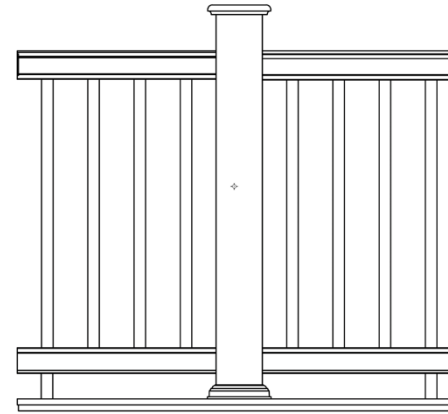
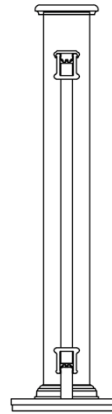
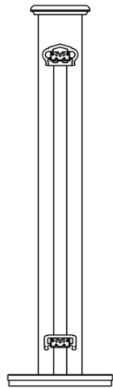
## Railing Floor/Counter Displays



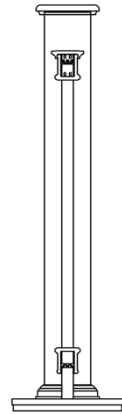
**RS40RAILDISP**



**RS35RAILDISP**



**RS60RAILDISP**







## Shutter Samples

SKU #	Description	Cost
SHUTTERSAMP-01	15"x30" Louver Shutter Sample Prefinished Black with Graphics & Color Swatch	\$115.71
SHUTTERSAMP-02	15"x30" Panel Shutter Sample Prefinished Black with Graphics & Color Swatch	\$119.70

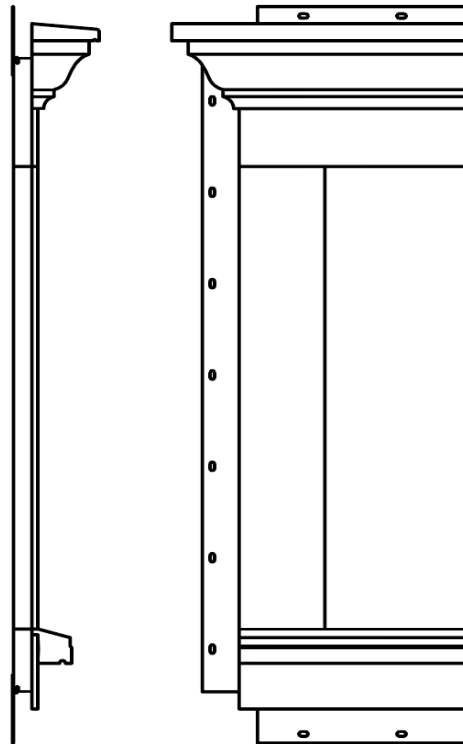
## Fence Samples

SKU #	Description	Cost
FS10-DS-01	FS10 Estate Countertop Display	\$172.90
FS10-DS-02	FS20 Cottage Countertop Display	Currently Unavailable



## Window Surround Sample

SKU #	Description	Cost
SURSAMPLEHALF	Salesman Sample, Half Surround, with WM52 Crown and 311 Sill on Apron, 5/4 x 4 with J-Channel	\$46.10



**SURSAMPLEHALF**



## Gutter Sample

SKU #	Description	Cost
GUTTERSAMP	Boston PVC Gutter Sample, 4" Length, with Label, Includes Bracket Mounting Components	\$12.46



## GUTTERSAMP